


DLK[®]
VENTILATOREN



**FAN
TECHNOLOGY**
OF COMPLETE INDUSTRY

Product Brochure

CONTENTS

Smoke Extraction Fans	3
Jet Fans	5
Plug Fans	7
Axial Fans	8
Industry Centrifugal Fans	9
DLK Smartphone App	10
Notes	11

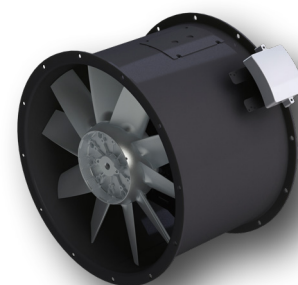


SMOKE EXTRACTION FANS

SAOM03 LOW PRESSURE AXIAL FAN DIRECT DRIVEN



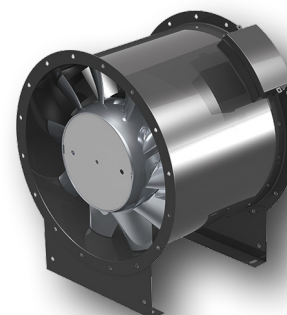
Range:	DN 315 – DN 1400
Application:	Supply and exhaust air up to 55°C or smoke extraction 300°C/120min
Flow rate:	max. 250.000 m ³ /h
Pressure:	max. 1.550 Pa
Motor:	Frequency: 50 Hz, max. 90 kW
Surface:	Steel, powder-coated
Impeller:	Aluminium/blade angle adjustable at standstill



SANM MEDIUM PRESSURE AXIAL FAN WITH OUTLET GUIDE VANES DIRECT DRIVEN



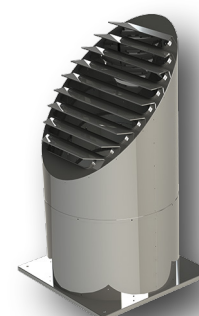
Range:	DN 315 – DN 1120
Application:	Supply and exhaust air up to 55°C or smoke extraction 300°C/120min and 400°C/120min
Flow rate:	max. 180.000 m ³ /h
Pressure:	max. 1.800 Pa
Motor:	Frequency: 50 Hz, max. 55 kW
Surface:	Steel, powder-coated
Impeller:	Aluminium/blade angle adjustable at standstill



SADM03 MEDIUM PRESSURE AXIAL FAN WITH OUTLET GUIDE VANES ROOF TOP FAN, DIRECT DRIVEN



Range:	DN 800 – DN 1000
Application:	Supply and exhaust air up to 55°C or smoke extraction 400°C/120min
Flow rate:	max. 105.000 m ³ /h
Pressure:	max. 1.000 Pa
Motor:	Frequency: 50 Hz, max. 45 kW
Surface:	stainless steel (AISI 304 and AISI 316)
Impeller:	Aluminium/blade angle adjustable at standstill



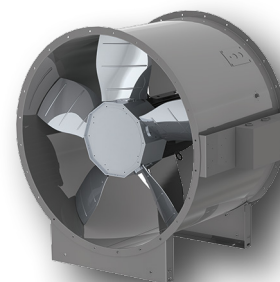


SMOKE EXTRACTION FANS

SARM03 LOW PRESSURE AXIAL FAN DIRECT DRIVEN, FULL REVERSIBLE



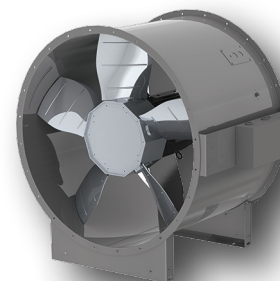
Range:	DN 630 – DN 2500
Application:	Supply and exhaust air up to 55°C continuous temperature or smoke extraction 300°C/120min
Flow rate:	max. 900.000 m ³ /h
Pressure:	max. 3.000 Pa
Motor:	Frequency: 50Hz/60Hz, max. 500 kW
Surface:	Steel, coated/stainless steel (AISI 304 and AISI 316)
Impeller:	reversible / blade angle adjustable at standstill



SARM04 LOW PRESSURE AXIAL FAN DIRECT DRIVEN, FULL REVERSIBLE



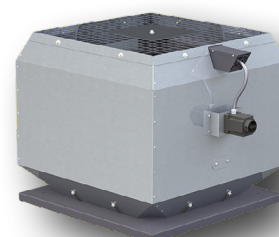
Range:	DN 630 – DN 2500
Application:	supply and exhaust air up to 55°C continuous temperature or smoke extraction 400°C/120 min
Flow rate:	max. 500.000 m ³ /h
Pressure:	max. 3.000 Pa
Motor:	Frequency: 50Hz/60Hz, max. 250 kW
Surface:	Steel, coated/stainless steel (AISI 304 and AISI 316)
Impeller:	reversible / blade angle adjustable at standstill



SRDM06 CENTRIFUGAL FAN ROOF TOP FAN



Range:	DN 355 – DN 1000
Application:	Supply and exhaust air up to 120°C continuous temperature or smoke extraction 600°C/120min and 400°C/120min
Flow rate:	max. 65.000 m ³ /h
Pressure:	max. 2.700 Pa
Motor:	Frequency: 50Hz, max. 45 kW
Surface:	Aluminium / Steel powder-coated
Impeller:	backward curved
Others:	VFD tested



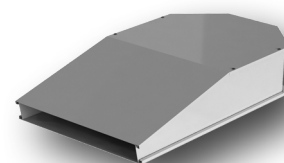


JET FANS

CRJM01 CENTRIFUGAL JET FAN GARAGE JET FAN



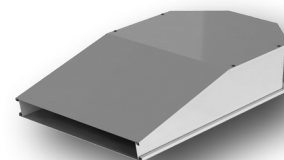
Range:	DN 500 – DN 560
Application:	Supply and exhaust air up to 55°C
Thrust:	max. 75 N
Motor:	Frequency: 50Hz/60Hz, max. 2,2kW
Surface:	Aluminium
Impeller:	Aluminium



CRJM-EC CENTRIFUGAL JET FAN



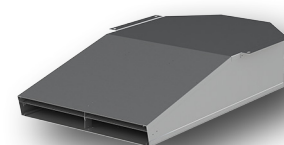
Range:	DN 400 – DN 450
Application:	Supply and exhaust air up to 55°C
Thrust:	max. 75 N
Motor:	Frequency: 50Hz/60Hz, max. 1,8kW
Surface:	Aluminium
Impeller:	Plastic



SRJM03 CENTRIFUGAL JET FAN



Range:	DN 500 – DN 560
Application:	Supply and exhaust air up to 55°C or smoke extraction 300°C/120min
Thrust:	max. 75 N
Motor:	Frequency: 50Hz, max. 2,2kW
Surface:	Aluminium
Impeller:	Steel, welded



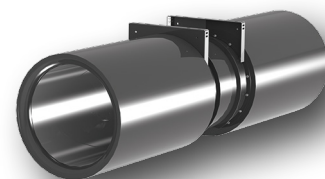


JET FANS

SATM TUNNEL JET FAN



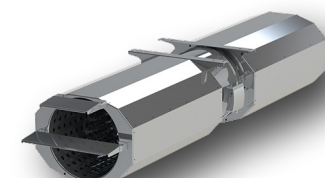
Range:	DN 630 – DN 1600
Application:	supply and exhaust air up to 55°C continuous temperature or smoke extraction 200°C/120min, 300°C/120min and 400°C/120min, truly reversible
Thrust:	max. 2.700 N
Motor:	Frequency: 50Hz/60Hz, max. 75 kW
Surface:	Steel, powder-coated /stainless steel (AISI 304 and AISI 316)
Silencer:	Steel, coated (F300/F400) or Aluminium (F200)
Impeller:	Steel/stainless steel



SAJM AXIAL JET FAN



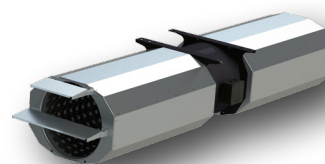
Range:	DN 315 – DN 400
Application:	Supply and exhaust air up to 55°C or smoke extraction 300°C/120min and 400°C/120min, reversible
Thrust:	max. 65 N
Motor:	Frequency: 50Hz/60Hz, max. 2,2 kW
Impeller:	Aluminium, unidirectional or reversible
Surface:	Aluminium



AAJM AXIAL JET FAN



Range:	DN 315 – DN 400
Application:	Supply and exhaust air up to 55°C
Thrust:	max. 65 N
Motor:	Frequency: 50 Hz, max. 2,5 kW
Impeller:	Aluminium, unidirektional oder reversible
Surface:	Aluminium



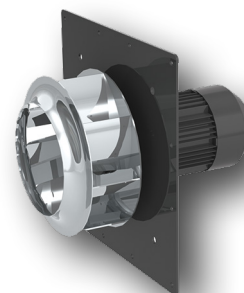


PLUG FANS

PREM11 PROCESS AIR FAN DIRECT DRIVEN, WITHOUT CASING



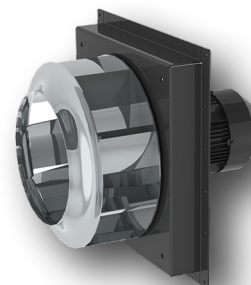
Range:	DN 400 – DN 1400
Application:	operating temperatures of -20°C up to +100°C
Flow rate:	max. 160.000 m ³ /h
Pressure:	max. 4.250 Pa
Motor:	Frequency: 50Hz/60Hz, max. 160 kW
Surface:	Steel, coated/galvanized/stainless steel (AISI 304 and AISI 316)
ATEX-Category:	Category 2 and 3, Gas/dust
Blades:	backward curved
Drive:	Direct/belt drive



PREM21 PROCESS AIR FAN DIRECT DRIVEN, WITHOUT CASING



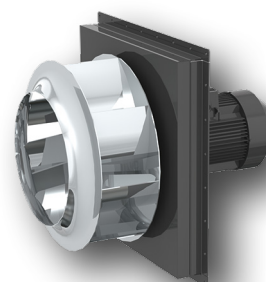
Range:	DN 400 – DN 1400
Application:	operating temperatures of -20°C up to +150°C
Flow rate:	max. 160.000 m ³ /h
Pressure:	max. 4.250 Pa
Motor:	Frequency: 50Hz/60Hz, max. 160 kW
Surface:	Steel, coated/galvanized/stainless steel (AISI 304 and AISI 316)
ATEX-Category:	Category 2 and 3, Gas/dust
Blades:	backward curved
Drive:	Direct/belt drive



PREM31 PROCESS AIR FAN DIRECT DRIVEN, WITHOUT CASING



Range:	DN 400 – DN 1400
Application:	operating temperatures of -20°C up to +300°C
Flow rate:	max. 160.000 m ³ /h
Pressure:	max. 4.250 Pa
Motor:	Frequency: 50Hz/60Hz, max. 160 kW
Surface:	Steel, coated/galvanized/stainless steel (AISI 304 and AISI 316)
ATEX-Category:	Category 2 and 3, Gas/dust
Blades:	backward curved
Drive:	Direct/belt drive



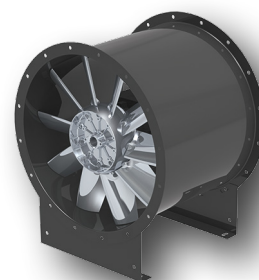


AXIAL VENTILATOREN

AAOM LOW PRESSURE AXIAL FAN DIRECT DRIVEN



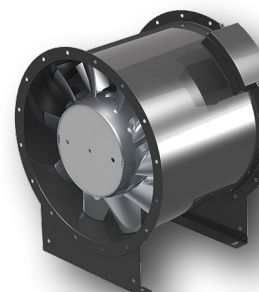
Range:	DN 315 – DN 1600
Application:	Supply and exhaust air up to 55°C or 120°C continuous temperature
Flow rate:	max. 325.000 m ³ /h
Pressure:	max. 2.000 Pa
Motor:	Frequency: 50/60Hz, max. 75 kW
Surface:	Steel, coated/galvanized/stainless steel (AISI 304 and AISI 316)
Impeller:	Aluminium/blade angle adjustable at standstill
ATEX-Category:	Category 2 and 3, Gas/dust
Drive:	Direct/belt drive



AANM MEDIUM PRESSURE AXIAL FAN WITH OUTLET GUIDE VANES DIRECT DRIVEN



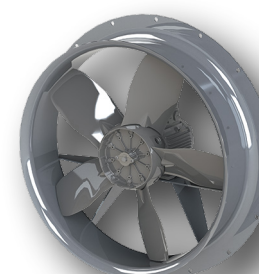
Range:	DN 315 – DN 1600
Application:	Supply and exhaust air up to 55°C or 120°C continuous temperature
Flow rate:	max. 340.000 m ³ /h
Pressure:	max. 3.500 Pa
Motor:	Frequency: 50/60Hz, max. 160 kW
Surface:	Steel, coated/galvanized/stainless steel (AISI 304 and AISI 316)
Impeller:	Aluminium, ab DN 1250 Steel blade angle adjustable at standstill
ATEX-Category:	Category 2 and 3, Gas/dust
Drive:	Direct/belt drive



AARM LOW PRESSURE AXIAL FAN DIRECT DRIVEN, TRULY REVERSIBLE



Range:	DN 630 – DN 800
Application:	Supply and exhaust air up to 85°C or 120°C continuous temperature
Flow rate:	max. 50.000 m ³ /h
Pressure:	max. 800 Pa
Motor:	Frequency: 50/60Hz, max. 15 kW
Surface:	Aluminium
Impeller:	Aluminium/blade angle adjustable at standstill/reversible
ATEX-Category:	Category 2 and 3, Gas/dust
Drive:	Direct





INDUSTRY CENTRIFUGAL FANS

CREM

INDUSTRY CENTRIFUGAL FAN
DIRECT DRIVEN



Range:	DN 400 – DN 1400
Application:	operating temperatures of -20°C up to +300°C
Flow rate:	max. 200.000 m ³ /h
Pressure:	max. 15.000 Pa
Motor:	Frequency: 50Hz/60Hz, max. 250 kW
Surface:	Steel, coated/galvanized/ stainless steel (AISI 304 and AISI 316)
ATEX-Category:	Category 2 and 3, Gas/dust
Impeller:	backward curved

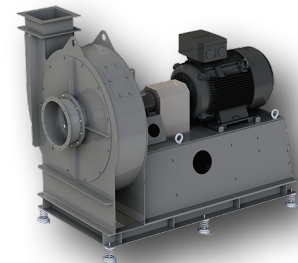


HREK

INDUSTRY CENTRIFUGAL FAN
KUPPLUNGSANTRIEB

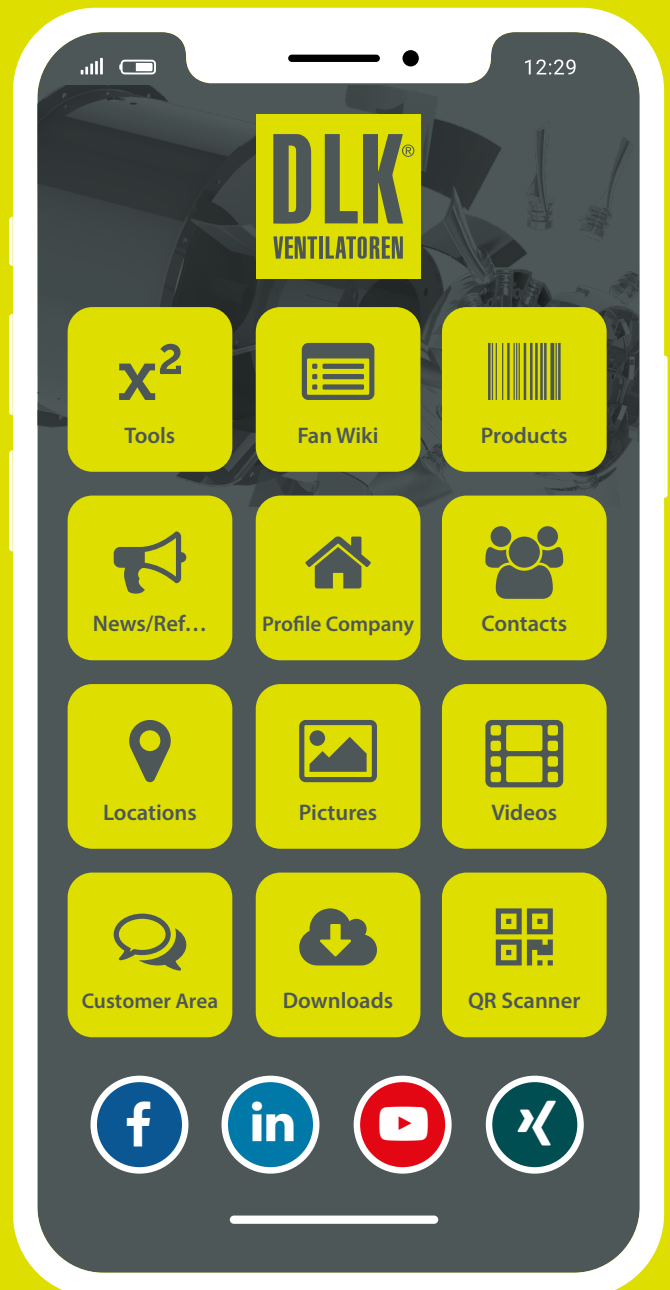


Range:	DN 400 – DN 1400
Application:	operating temperatures of -20°C up to +300°C
Flow rate:	max. 250.000 m ³ /h
Pressure:	max. 15.000 Pa
Motor:	Frequency: 50Hz/60Hz, max. 315 kW
Surface:	Steel, coated/galvanized/ stainless steel (AISI 304 and AISI 316)
ATEX-Category:	Category 2 and 3, Gas/dust
Blades:	backward curved



GET THE WORLD OF FANS ON YOUR SMARTPHONE

With this app, DLK Ventilatoren GmbH aims to provide our customers, prospective buyers, consultants and other technically interested persons a tool which offers quick help on construction sites and/or during meetings with regard to industrial fans and their design. Moreover, the application forms an interesting information and communication platform for all users in the world of industrial fans.



NOTES

A series of horizontal dotted lines for writing notes.

DLK[®]
VENTILATOREN



DLK Ventilatoren GmbH

Ziegeleistraße 18
D-74214 Schöntal-Berlichingen
Germany
fon: +49(0) 7943 – 9102 – 0
fax: +49(0) 7943 – 9102 – 10
mail: info@dlk.com

DLK Ventilatoren Sdn Bhd

Lot 1799 Jalan Balakong
Bukit Belimbing, Balakong
MY 43300 Seri Kembangan, Selangor
Malaysia
fon: +60 (38) 328 0921
mail: sales.asia@dlk.com

WWW.DLK.COM